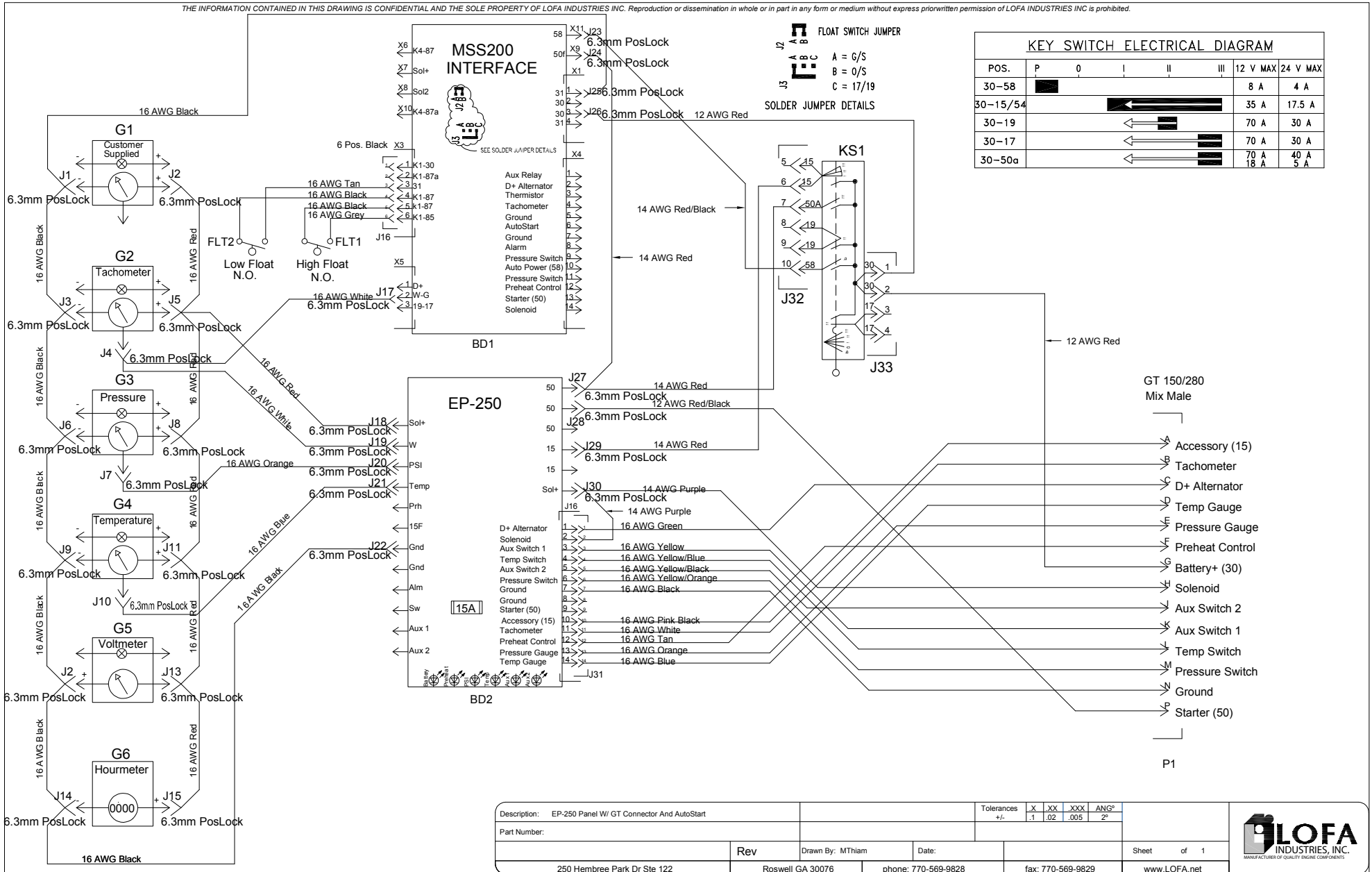


EP250 Series Panel Schematic with Delphi GT Connector Shown with Optional MSS-200 Auto Start / Stop Module

THE INFORMATION CONTAINED IN THIS DRAWING IS CONFIDENTIAL AND THE SOLE PROPERTY OF LOFA INDUSTRIES INC. Reproduction or dissemination in whole or in part in any form or medium without express prior written permission of LOFA INDUSTRIES INC is prohibited.

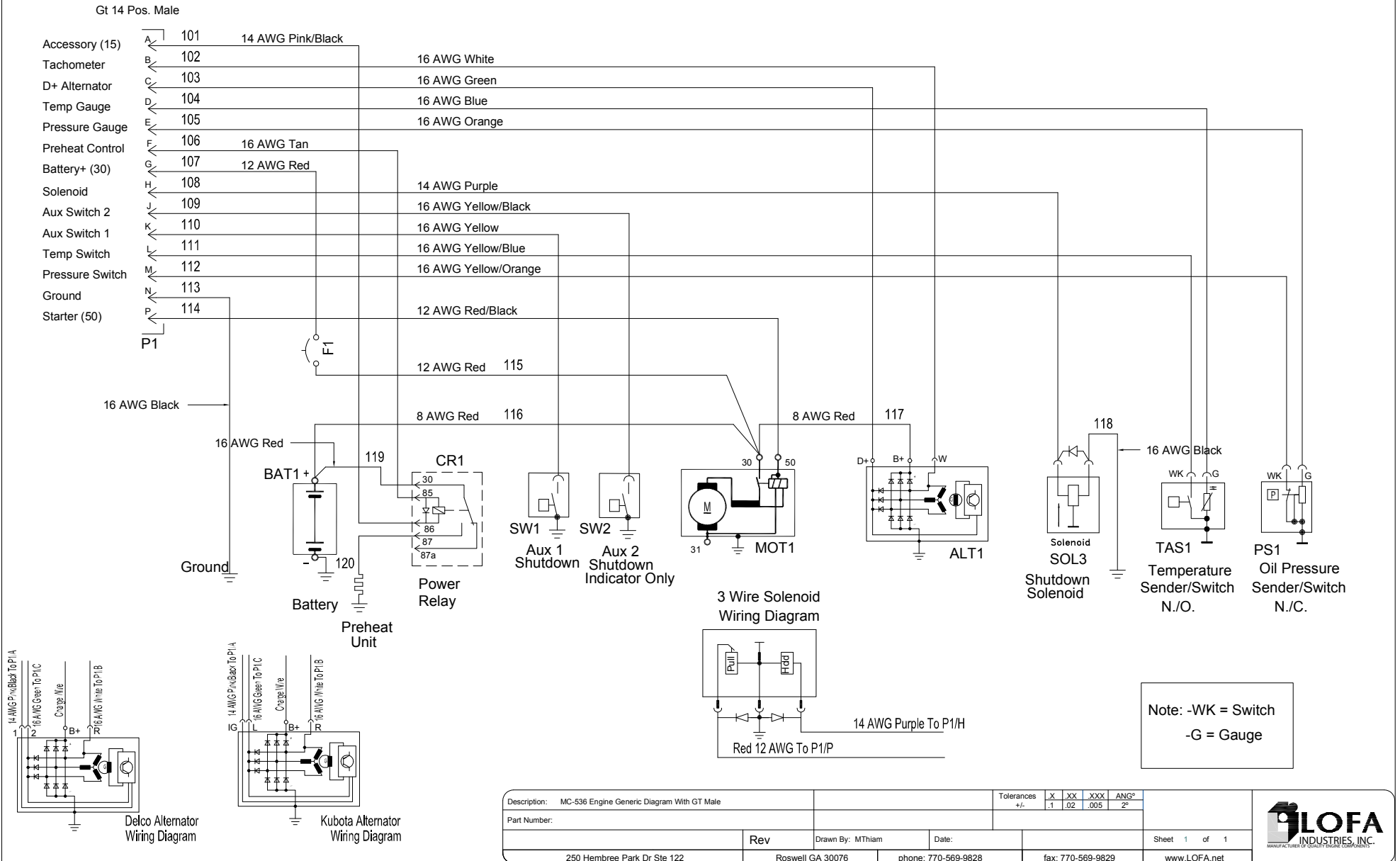


Description: EP-250 Panel W/ GT Connector And Auto Start		Tolerances	
Part Number:		X	XX
Rev		.1	.02
Drawn By: MThiam		XXX	ANG°
Date:		.005	2"
250 Hembree Park Dr Ste 122		Roswell GA 30076	
phone: 770-569-9828		fax: 770-569-9829	
Sheet of 1		www.LOFA.net	



EP250 Series Panel Schematic

THE INFORMATION CONTAINED IN THIS DRAWING IS CONFIDENTIAL AND THE SOLE PROPERTY OF LOFA INDUSTRIES INC. Reproduction or dissemination in whole or in part in any form or medium without express prior written permission of LOFA INDUSTRIES INC is prohibited.



Description: MC-536 Engine Generic Diagram With GT Male		Tolerances	
Part Number:		±	XX
Rev		.1	.02
Drawn By: MThiam	Date:	XXX	ANG°
250 Hembree Park Dr Ste 122	Roswell GA 30076	.005	2"
phone: 770-569-9828	fax: 770-569-9829	Sheet 1 of 1	
www.LOFA.net		www.LOFA.net	

