

# 230 Series Heavy-Duty Pressure Switch

The Series 230 Heavy-Duty Pressure Switches provide an economical and reliable choice for a multitude of pressure switch applications. Available in a variety of part numbers to cover most commonly demanded set points. Optional set points may also be field set to meet customer requirements.

Series 230 Pressure Switches are compact and compatible with a wide variety of fluids, making them ideal for most engine, brake, hydraulic and air system applications. All switches are provided with an insulated ground terminal to assure a quality ground circuit.

## Normally Open – Single Circuit; 2 terminals, insulated ground

Range	Part No.
4 PSI	230 404
15 PSI	230 415
60 PSI	230 460

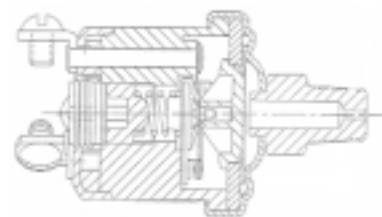
## Normally Closed – Single Circuit; 2 terminals, insulated ground

Range	Part No.
4 PSI	230 504
15 PSI	230 515
60 PSI	230 560

## Dual Circuit – normally open, normally closed, insulated ground

Range	Part No.
4 PSI	230 604
15 PSI	230 615
60 PSI	230 660

**Overall Dimensions: Length = 2.52" / Width = 1.47"**



(2 terminal configuration)



(3 terminal configuration)

### Heavy-Duty Pressure Switch Technical Specifications

**Normally Open:** Contacts open until pressure rises which then completes the circuit.

**Normally Closed:** Contacts closed until pressure rises which then breaks the circuit.

**Direct action blade contact pressure switches with adjustable contact ranges:**

4 – 7 PSI ± 1; 14 – 24 PSI ± 3; 51 – 90 PSI ± 7

**Contacts:** Silver alloy, gold-plated

**Operating Pressure (Set Point Range)**

4 – 24 PSI = 150 PSI    25 – 90 PSI = 250 PSI

**Proof Pressure:** 500 PSI

**Burst Pressure (Set Point Range)**

4 – 24 PSI = 750 PSI    25 – 90 PSI = 1,250 PSI

**Base:** Brass

**Diaphragm:** Polyimide film

**Cover:** Glass reinforced polyester

#### Electrical Ratings

Resistive: 15 Amp – 6 VDC

8 Amp – 12 VDC

4 Amp – 24 VDC

Inductive: 1 Amp – 120 VAC

5 Amp – 240 VAC

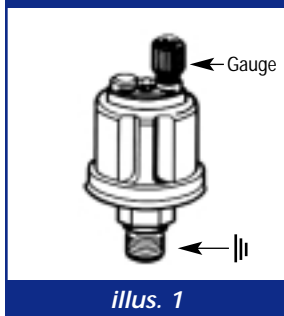
**Temperature Range:** -40°F to 250°F

**Terminals:** 1/4" blade, #8 – 32 screws

**Thread Size:** 1/8 – 27 NPT

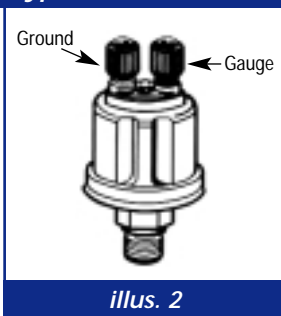
# Pressure Senders

## Types of Connections



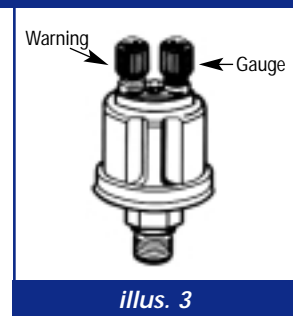
illus. 1

Standard Ground:  
sender case to  
common ground



illus. 2

Floating Ground:  
isolated terminal to  
common ground; and  
Dual Station Floating  
Ground



illus. 3

Standard Ground  
with Warning Contact

Table 1: 80 PSI / 5 bar (10–180 OHM)

Thread	Warning Contact (illus. 3)	Std. Ground (illus. 1)	Floating Ground (illus. 2)	Dual Station (illus. 1)	Dual Station Floating Ground (illus. 2)	# Stamped on Sender	Washer Required
1/8–27 NPT	–	360 003	–	–	–	29/4	–
1/8–27 NPT	–	–	360 410	–	–	32/1	–
1/8–27 NPT	–	–	–	–	362 001	1/1	–
1/8–27 NPT	7.0 PSI	360 009	–	–	–	30/23	–
1/8–27 NPT	–	–	–	362 033	–	3/1	–
1/4–18 NPT	–	360 005	–	–	–	29/8	–
1/4–18 NPT	8.0 PSI	360 019	–	–	–	30/20	–
1/4–18 NPT	–	–	360 441B	–	–	32/16	–
1/8–28 BSP	–	360 080	–	–	–	29/61	–
M10 x 1K	–	360 001	–	–	–	29/1	–
M10 x 1K	7.0 PSI	360 006	–	–	–	30/2	–
M10 x 1K	10.0 PSI	360 034	–	–	–	30/4	–
M12 x 1.5	–	360 002	–	–	–	29/85	X
M12 x 1.5	8.5 PSI	360 007	–	–	–	30/6	X
M14 x 1.5	–	360 027	–	–	–	29/26	X
M15 x 1.5	7.1 PSI	360 028	–	–	–	30/28	X

Universal Sender Kit includes 360 003 sender, 1/4–18", 3/8–18" and 1/2–14" bushing.

360 900

Table 2: 80 PSI / 5 bar (240–33 OHM)

Thread	Warning Contact (illus. 3)	Std. Ground (illus. 1)	Floating Ground (illus. 2)	Dual Station (illus. 1)	Dual Station Floating Ground (illus. 2)	# Stamped on Sender
1/8–27 NPT	–	360 801	–	–	–	AT 84200

Table 3: 100 PSI / 7 bar (10–180 OHM)

Thread	Warning Contact (illus. 3)	Std. Ground (illus. 1)	Floating Ground (illus. 2)	Dual Station (illus. 1)	Dual Station Floating Ground (illus. 2)	# Stamped on Sender
1/8–27 NPT	–	360 086	–	–	–	655

**Table 4: 100 PSI / 7 bar (240–33 OHM)**

Thread	Warning Contact (illus. 3)	Std. Ground (illus. 1)	Floating Ground (illus. 2)	Dual Station (illus. 1)	Dual Station Floating Ground (illus. 2)	# Stamped on Sender
1/8–27 NPT	–	360 811	–	–	–	734

**Table 5: 150 PSI / 10 bar (10–180 OHM)**

Thread	Warning Contact (illus. 3)	Std. Ground (illus. 1)	Floating Ground (illus. 2)	Dual Station (illus. 1)	Dual Station Floating Ground (illus. 2)	# Stamped on Sender	Washer Required
1/8–27 NPT	–	360 004	–	–	–	29/12	–
1/8–27 NPT	–	–	360 430	–	–	32/14	–
1/8–27 NPT	–	–	–	362 034	–	3/2	–
1/8–27 NPT	–	–	–	–	362 002	1/2	–
1/8–27 NPT	11.4 PSI	360 025	–	–	–	30/15	–
1/8–28 BSP	–	360 081	–	–	–	29/62	–
1/4–18 NPT	–	360 021	–	–	–	29/20	–
M10 x 1K	–	360 015	–	–	–	29/10	–
M10 x 1K	7.0 PSI	360 023	–	–	–	30/9	–
M10 x 1K	29.6 PSI	360 033	–	–	–	30/41	–
M12 x 1.5	–	360 016	–	–	–	29/13	X
M12 x 1.5	7.0 PSI	360 024	–	–	–	30/22	X

**Universal Sender Kit** includes 360 004 sender, 1/4–18", 3/8–18" and 1/2–14" bushing.

**360 905**

**Table 6: 350 PSI / 25 bar (10–180 OHM)**

Thread	Warning Contact (illus. 3)	Std. Ground (illus. 1)	Floating Ground (illus. 2)	Dual Station (illus. 1)	Dual Station Floating Ground (illus. 2)	# Stamped on Sender	Washer Required
1/8–27 NPT	–	–	360 431	–	–	38/3	–
1/8–27 NPT	–	–	–	362 035	–	4/1	–
1/8–27 NPT	–	–	–	–	362 003	2/1	–
3/8–18 NPT	–	–	360 432	–	–	38/2	–
3/8–18 NPT	–	–	–	–	362 007	2/2	–
M14 x 1.5	–	–	360 442	–	–	38/1	X

**Table 7: 400 PSI / 28 bar (10–180 OHM)**

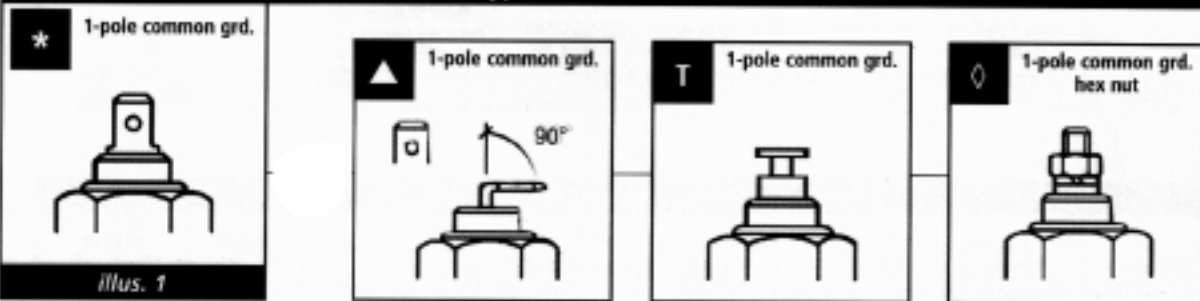
Thread	Warning Contact (illus. 3)	Std. Ground (illus. 1)	Floating Ground (illus. 2)	Dual Station (illus. 1)	Dual Station Floating Ground (illus. 2)	# Stamped on Sender
1/8–27 NPT	–	–	360 406	–	–	38/8
1/8–27 NPT	–	–	–	362 004	–	2/3

**Table 8: 30 PSI / 2 bar (10–180 OHM)**

Thread	Warning Contact (illus. 3)	Std. Ground (illus. 1)	Floating Ground (illus. 2)	Dual Station (illus. 1)	Dual Station Floating Ground (illus. 2)	# Stamped on Sender
1/8–27 NPT	–	–	360 043	–	–	32/25

# Temperature Senders

## Types of Connections



illus. 1  
Standard Ground:  
sender case to  
common ground

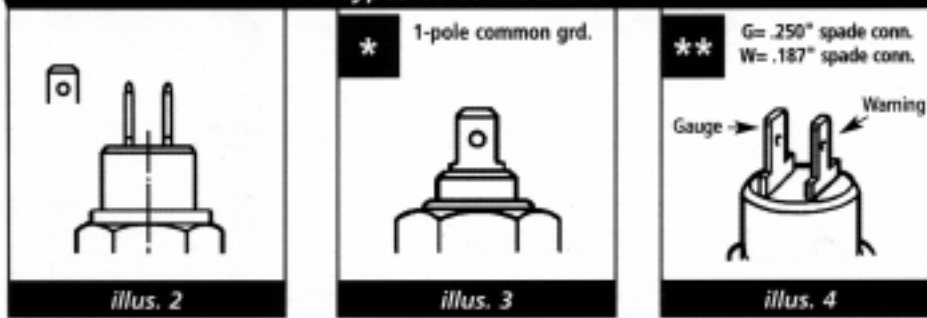
Table A: 250°F / 120°C

Thread	Terminal Type	Warning Contact (illus. 4)	Std. Ground (illus. 1)	Floating Ground (illus. 2)	Dual Station (illus. 3)	Dual Station Floating Ground (illus. 2)	# Stamped on Sender	Washer Required
1/8-27 NPT	T	-	323 095	-	-	-	801/5/1	-
1/4-18 NPT	*	-	323 420	-	-	-	801/1/9	-
1/4-18 NPT	+	-	-	323 477	-	-	805/1/7	-
1/4-18 NPT	*	-	-	-	325 001	-	801/2/1	-
1/4-18 NPT	+	-	-	-	-	325 002	805/3/1	-
3/8-18 NPT	*	-	323 094	-	-	-	801/1/7	-
3/8-18 NPT	0	-	323 421	-	-	-	801/1/38	-
3/8-18 NPT	*	-	-	323 479	-	-	805/1/5	-
3/8-18 NPT	+	-	-	-	325 008	-	801/2/4	-
3/8-18 NPT	*	-	-	-	-	325 007	805/3/3	-
1/2-14 NPT	+	-	323 093	-	-	-	801/1/10	-
1/2-14 NPT	0	-	323 419	-	-	-	801/1/16	-
1/2-14 NPT	**	195°F ± 5°F	323 097	-	-	-	803/1/37	-
1/2-14 NPT	**	205°F ± 5°F	323 098	-	-	-	803/1/19	-
1/2-14 NPT	**	217°F ± 5°F	323 099	-	-	-	803/1/25	-
1/2-14 NPT	**	230°F ± 5°F	323 100	-	-	-	803/1/32	-
1/2-14 NPT	+	-	-	323 478	-	-	805/1/4	-
5/8-18 NF-3	**	209°F ± 5°F	323 026	-	-	-	803/1/2	-
5/8-18 UNF	0	-	323 422	-	-	-	801/1/25	-
5/8-18 UNF	+	-	-	-	-	325 003	805/3/2	-
5/8-18 UNF	*	-	-	323 483	-	-	805/1/2	-
5/8-18 NF-3	*	203°F ± 5°F	323 487	-	-	-	803/1/11	-
M10 x 1	T	-	323 088	-	-	-	801/1/7/1	X
M14 x 1.5	0	-	323 416	-	-	-	801/1/26	X
M14 x 1.5	+	-	-	323 425	-	-	805/1/1	X
M16 x 1.5	**	203°F ± 5°F	323 028	-	-	-	803/1/7	X
M16 x 1.5	0	-	323 417	-	-	-	801/1/29	X
M18 x 1.5	*	-	323 418	-	-	-	801/1/22	X

**Universal Sender Kit** includes 323 095 sender, 1/4-18", 3/8-18" and 1/2-14" bushing and .250 (1/4") spade terminal

323 900

Types of Connections



*illus. 2*  
 Floating Ground:  
 isolated terminal to  
 common ground

*illus. 3*  
 Dual Station:  
 2 gauges operation  
 from single sender

*illus. 4*  
 Dual Station  
 Floating Ground:  
 same as Dual Station;  
 however, isolated  
 terminal to ground

Connection Key

- \* Straight .250" spade terminal
- ◊ 4 mm screw stud
- ▲ 90° angle .250" spade spade terminal
- T .250" "posi lock" terminal
- \* 56 Series "Packard" female terminal, unsealed w/terminal housing
- \*\* Gauge .250" spade terminal; Warning .187" spade terminal

Table B: 300°F / 150°C

Thread	Terminal Type	Warning Contact (illus. 4)	Std. Ground (illus. 1)	Floating Ground (illus. 2)	Dual Station (illus. 3)	Dual Station Floating Ground (illus. 2)	# Stamped on Sender	Washer Required
1/8-27 NPT	T	-	323 057	-	-	-	801/9/1	-
1/4-18 NPT	◊	-	323 058	-	-	-	801/4/17	-
1/4-18 NPT	*	-	-	323 485	-	-	805/3/2	-
3/8-18 NPT	*	-	323 059	-	-	-	801/4/15	-
1/2-14 NPT	◊	-	323 060	-	-	-	801/4/6	-
1/2-14 NPT	**	250°F ± 5°F	323 120	-	-	-	803/2/15	-
5/8-18 UNF	◊	-	323 061	-	-	-	801/4/9	-
5/8-18 UNF	*	-	-	323 431	-	-	805/3/3	-
M10 x 1	T	-	323 423	-	-	-	801/9/3	X
M12 x 1.5	T	-	323 092	-	-	-	801/10/3	X
M14 x 1.5	▲	-	323 055	-	-	-	801/12/2	X
M16 x 1.5	▲	-	323 056	-	-	-	801/12/1	X
M18 x 1.5	▲	-	323 064	-	-	-	801/12/3	X
M22 x 1.5	▲	-	323 066	-	-	-	801/12/4	X

**Universal Sender Kit** includes 323 057 sender, 1/4-18", 3/8-18" and 1/2-14" bushing and .250 (1/4") spade terminal

323 905

Table C: 400°F / 200°C

Thread	Terminal Type	Warning Contact (illus. 4)	Std. Ground (illus. 1)	Floating Ground (illus. 2)	Dual Station (illus. 3)	Dual Station Floating Ground (illus. 2)	# Stamped on Sender	Washer Required
1/8-27 NPT	T	-	323 050	(Long probe, 5/8" long) Ford			801/13/1	-
1/8-27 NPT	T	-	323 086	(Short probe, 3/8" long) GM			801/18/1	-
M10 x 1.5	T	-	323 091	-	-	-	801/3/1	X
M10 x 1	T	-	323 090	-	-	-	801/3/2	X